

APPLICATION

The Amsco Warming Cabinet Mid-Size Single Compartment is designed to raise the temperature of surgical IV and irrigation solutions and/or blankets to an acceptable level for hospital and surgical outpatient center applications.

FEATURES

Heating chamber that is 7.2 cu. ft. (0.2 m³) in capacity.

USB port for temperature recording.

Electrical numeric keypad door lock for keyless entry to lock/unlock the door. Mechanical override protection available in the event of power failure.

Two slide-out wire baskets to accommodate surgical fluids packaged in bags or bottles. The wire baskets are interchangeable with wire shelf to accommodate blankets.

STANDARDS

The mid-size warming cabinet meets applicable requirements of the following standards, and carries the appropriate symbols.

- **Underwriters Laboratories (UL) Standard 61010-1, 2nd Ed.**, as certified by ETL Testing Laboratories, Inc.
- **Standard IEC 61010-2-010, 2nd Ed.**, as certified by ETL Testing Laboratories, Inc.
- **Standard CSA C22.2 No. 61010-1-04, 1st Ed.**, Standard for Electro-Medical Equipment as certified by ETL Testing Laboratories, Inc.
- **CENELEC EN 61010-1, Issued 2001/03/01.** Electrical Safety as certified by ETL Testing Laboratories, Inc.
- **IEC 61326-1, 1st Ed.**, EMC testing as certified by ETL Testing Laboratories, Inc.
- **California OSHPD Seismic Pre-Approval**
- **Medical Device Directive (93/42 IEEC)**



Mid-Size Single Compartment Model – Freestanding/Recessed

Mid-Size Single Compartment Model – with optional mobile base

(Typical only - some details may vary.)

CONSTRUCTION

Freestanding and recessed units ship identically (with outer side, top and back covers). Outer side, top and back covers are removed for recessed/under-counter installation. When recessed, unit requires a connection to building service (not provided by STERIS). The unit contains a heating chamber, instrumentation and operating controls.

Corners and intersections on the face of the cabinet and door are structurally formed for rigidity, cleanability and appearance. The mid-size warming cabinet is supported on a stainless-steel integral subbase. The cabinet door is available in solid vinyl coated galvanized steel material with stainless steel inside that outlines a tempered double pane glass window. Interior air ducts and fan guards are flame retardant Acrylonitrile Butadiene Styrene (ABS) material. If a freestanding model, the cabinet top and side panels are vinyl coated galvanized steel.

Door is of double-wall construction with 1-1/2" (38 mm) thick insulation between the walls. Right hand door swing is provided; swing is reversible. Door closes against a heat-resistant, magnet-embedded, vinyl gasket. Pivot type hinges are stainless steel.

The Selections Checked Below Apply To This Equipment

MOUNTING

- Freestanding
- Wall Mounted
- Recessed

MOBILE BASE OPTION

- Mobile Base with Bumpers and Locks

VOLTAGE

- 120 V
- 230 V

ACCESSORY

- Ventilation Kit (for recessing warming cabinet into enclosed cabinet under counter)

NOTE: All cabinets are furnished with right hand hinge. Door swing is reversible during installation.

Item _____

Location(s) _____

Heating chamber compartment is insulated with 1" (25 mm) thick, fiberglass blanket. An impedance protected fan circulates air within the chamber to provide even heat distribution.

The heating chamber compartment includes two polyester powder coated steel wire baskets, each with a 30-L capacity to accommodate most commonly used surgical fluids packaged in bags or bottles. Both wire baskets slide out to make it easier to access or store fluids in the back. The wire baskets are interchangeable with one polyester powder coated steel wire shelf that is provided with the mid-size warming cabinet to accommodate blankets. The wire shelf is adjustable in 2-3/4" (70 mm) increments.

Chamber is heated by an electric rod heater operating on 120 or 230 Volt, 50/60 Hz power.

ENGINEERING DATA

Unit	Approx. Unit Weight lb (kg)
Mid-Size Open Mounted	207 (94)
Mid-Size Recessed Mounting	177 (80.3)
Mid-Size with Mobile Base	243 (110.2)

CONTROLS

Cabinet controls are digital and have a Main Power on/off switch.

The single cabinet control panel has control and temperature display functions including an on/standby switch, digital temperature display, °F/°C selection key and a SET temperature key with incremental raise/lower temperature set keys. LED lights indicate the on/standby status for cabinet heating, door ajar position and when SET selections have been made. Temperature control lockout secures user adjustments.

Single compartment controls include IV and IRR/Blanket mode setting switches, limiting temperature set ranges to 90-110°F (32.2-43.3°C) and 90-160°F (32.2-71.1°C), respectively.

The control monitors and regulates the heating of the interior compartment. The control ensures a temperature accuracy within ±3°F (±1.7°C) of the setpoint for temperature settings between 90-110°F (32.2-43.3°C) when warming IV/irrigation solution. At temperature settings between 110-160°F (43.3-71.1°C), the control ensures a temperature accuracy within ±5°F (±2.8°C) of the setpoint when warming irrigation solution.

An overtemperature alarm visually and audibly alerts operator should an overtemperature condition occur (chamber temperature greater than 10°F [5.5°C] above set temperature). In the event of an overtemperature condition, the overtemperature control automatically turns off the heater.

USB peripheral connection allows Customer to plug a PC or laptop computer into the mid-size warming cabinet to retrieve stored temperature data from control memory. The data is stored or printed from the computer. Data capture software for use on the PC is provided with the mid-size warming cabinet.

MOUNTING ARRANGEMENT

Mid-size models may be installed as freestanding, wall mounted, recessing into a partition wall or under counter into an enclosed cabinet. If model is recess installed, a synthetic-rubber sealing gasket is provided to ensure close fit of cabinet front to the face of the wall partition. Recessed cabinet requires no supplementary supports behind the wall partition (except in seismic locations). All mounting arrangements require proper ventilation to help ensure peak performance.

OPTIONS

Mobile base with bumpers. Casters are used to allow mid-size warming cabinet mobility. Press foot lever down to lock; push foot lever in to unlock.

PREVENTIVE MAINTENANCE

A global network of skilled service specialists can provide periodic inspections and adjustments to help ensure cost-effective performance. STERIS representatives can provide information regarding annual maintenance agreements.

NOTES

1. Due to the variety of building constructions employed, fasteners for mounting cabinet to wall are not provided by STERIS. Wall(s) must be adequately reinforced to support operating weight of cabinet.
2. Customer must ensure warming cabinet is installed per applicable seismic requirements.

INTERNAL DIMENSIONS AND CAPACITY

(Height x Width x Depth)
22-3/4 x 24 x 22-7/8" (578 x 610 x 581 mm) = 7.2 cu. ft. (0.2m ³)

UTILITY REQUIREMENTS

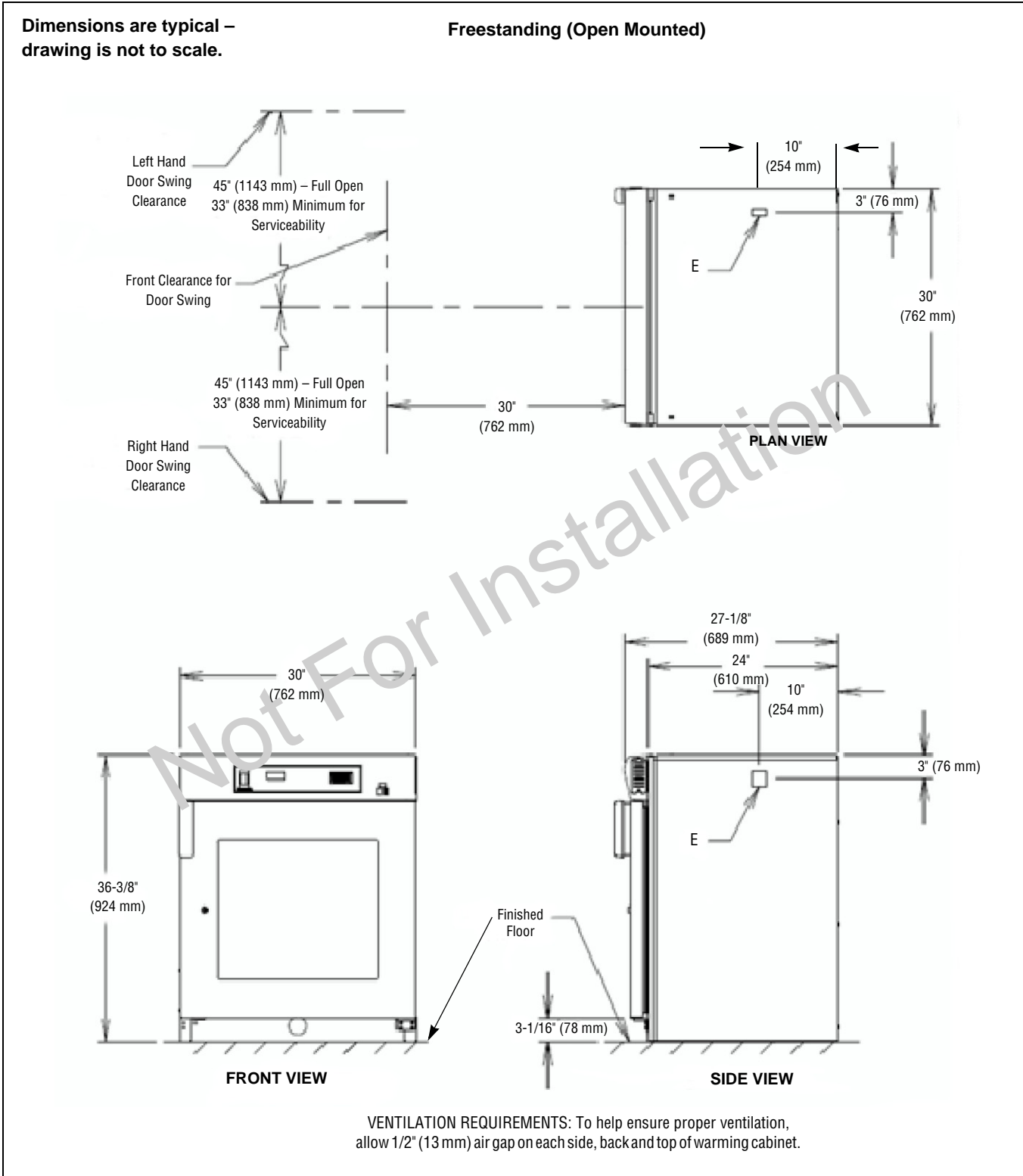
Electricity (E)

120 Volt, 50/60 Hz, 1-Phase, 7.0 Amps, 840 Watts; or
230 Volts, 50/60 Hz, 1-Phase, 3.6 Amps, 869 Watts

CUSTOMER IS RESPONSIBLE FOR COMPLIANCE WITH APPLICABLE LOCAL AND NATIONAL CODES AND REGULATIONS.

Reference listed equipment drawing for detailed installation specifications.
Obtain this drawing from your STERIS Representative.

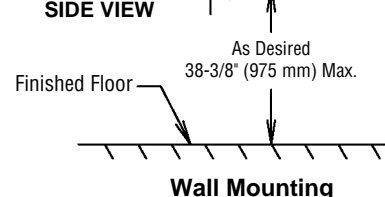
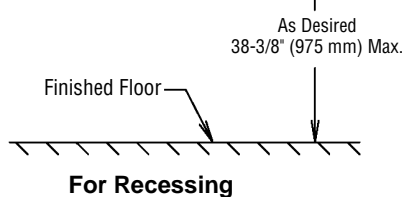
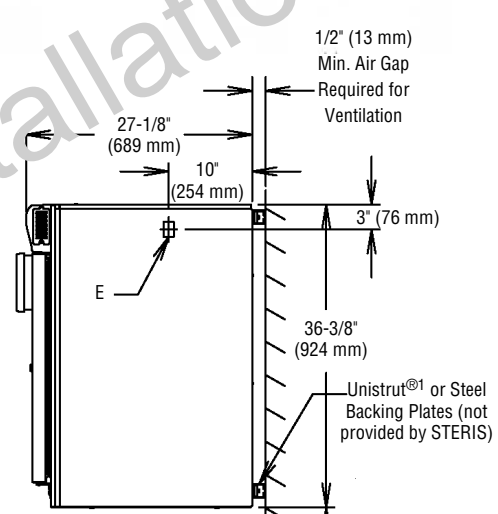
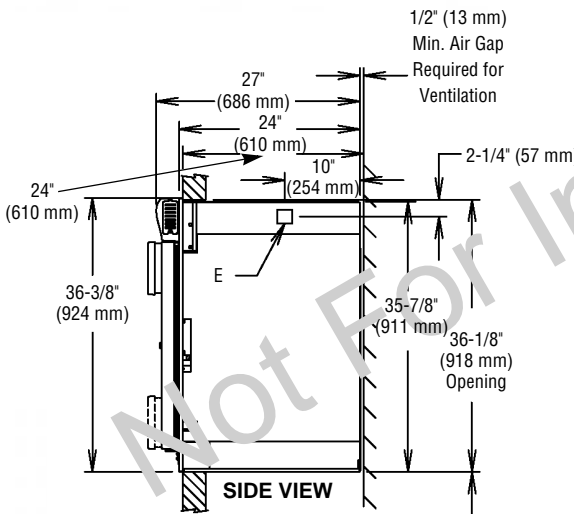
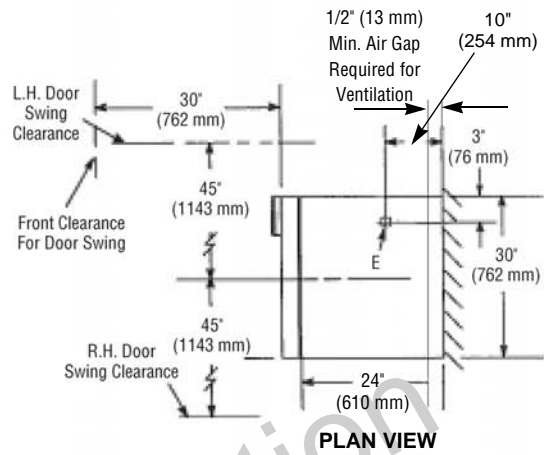
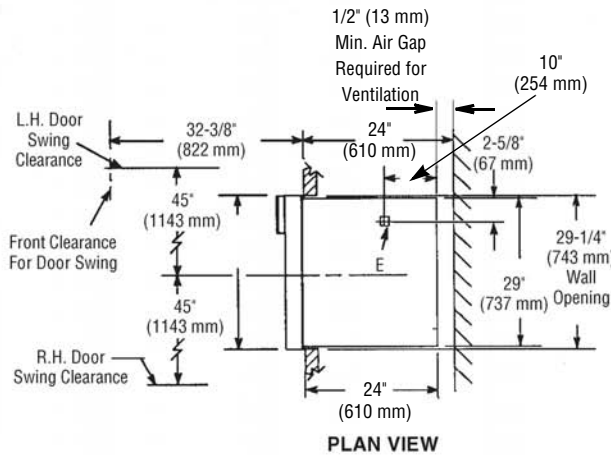
Equip. Dwg. No.	Equipment Drawing Title
413726-871	Mid-Size Warming Cabinet Free Standing/Wall Mount/Recessed



**Reference listed equipment drawing for detailed installation specifications.
Obtain this drawing from your STERIS Representative.**

Equip. Dwg. No.	Equipment Drawing Title
413726-871	Mid-Size Warming Cabinet Free Standing/Wall Mount/Recessed

**Dimensions are typical –
drawing is not to scale.**



VENTILATION REQUIREMENTS: When fully recessing warming cabinet into wall or alcove, allow 1/2" (13 mm) air gap at rear of unit and at least 2' (1 m) of open space above unit top exterior surface into plenum area.

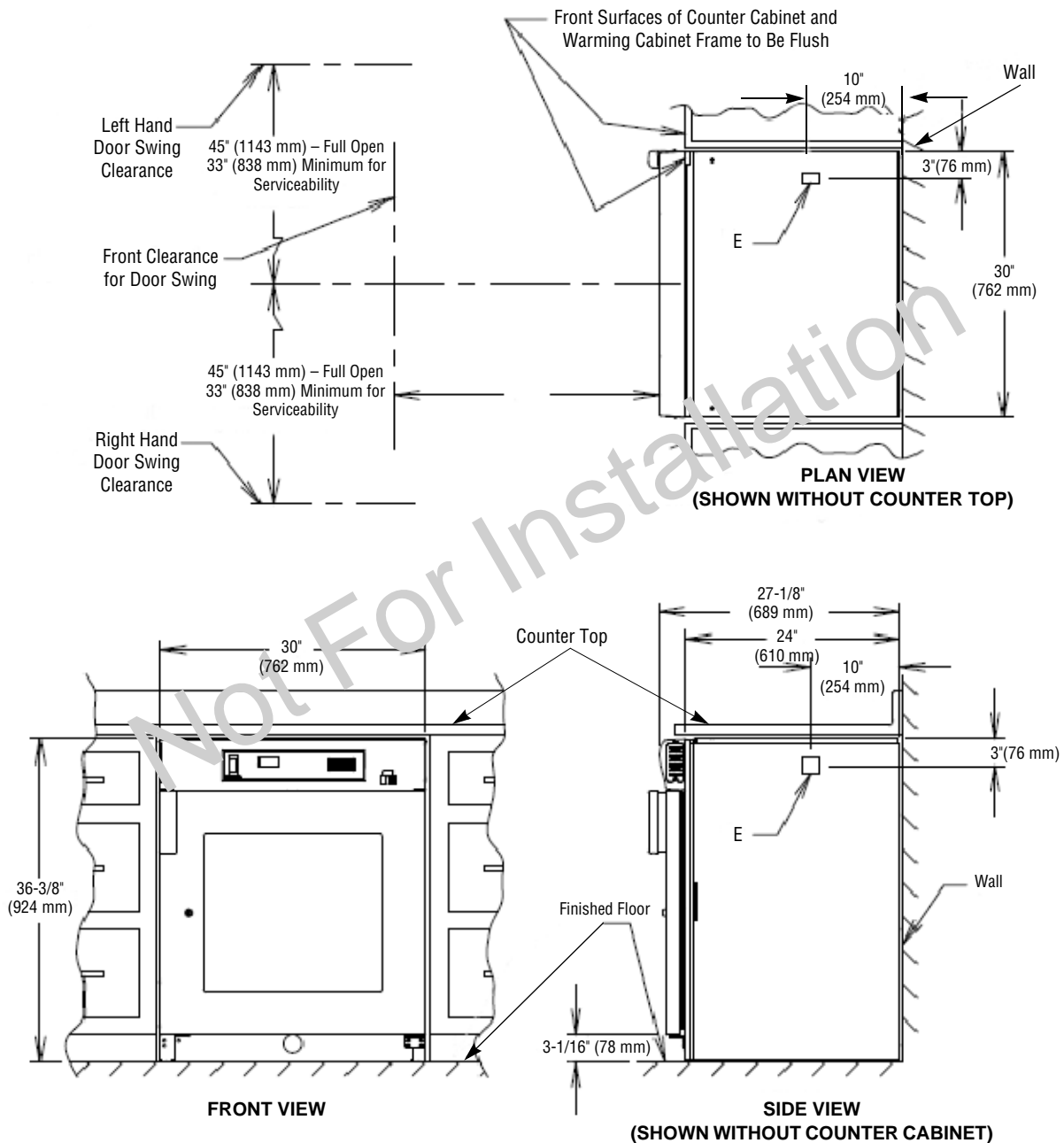
¹ Unistrut® is a registered trademark of Unistrut Corporation and/or its affiliates in the United States and/or other countries.

Reference listed equipment drawing for detailed installation specifications.
Obtain this drawing from your STERIS Representative.

Equip. Dwg. No.	Equipment Drawing Title
413726-871	Mid-Size Warming Cabinet Free Standing/Wall Mount/Recessed

Dimensions are typical –
drawing is not to scale.

For Open Mounted Under Counter



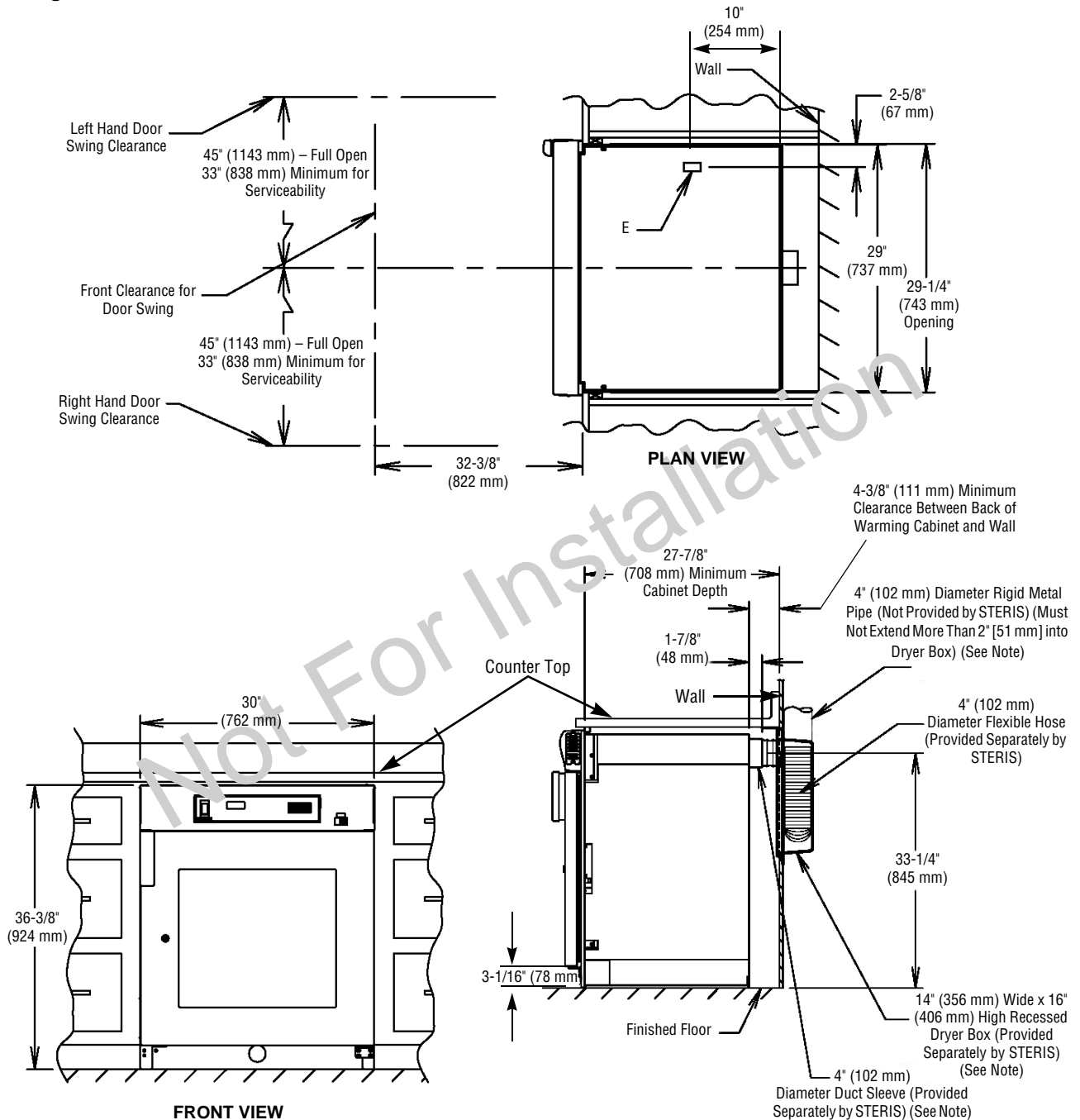
VENTILATION REQUIREMENTS: To help ensure proper ventilation, allow 1/2" (13 mm) air gap on each side, back and top of warming cabinet.

Reference listed equipment drawing for detailed installation specifications.
Obtain this drawing from your STERIS Representative.

Equip. Dwg. No.	Equipment Drawing Title
413726-871	Mid-Size Warming Cabinet Free Standing/Wall Mount/Recessed

Dimensions are typical –
drawing is not to scale.

For Recessing into Enclosed Cabinet Under Counter



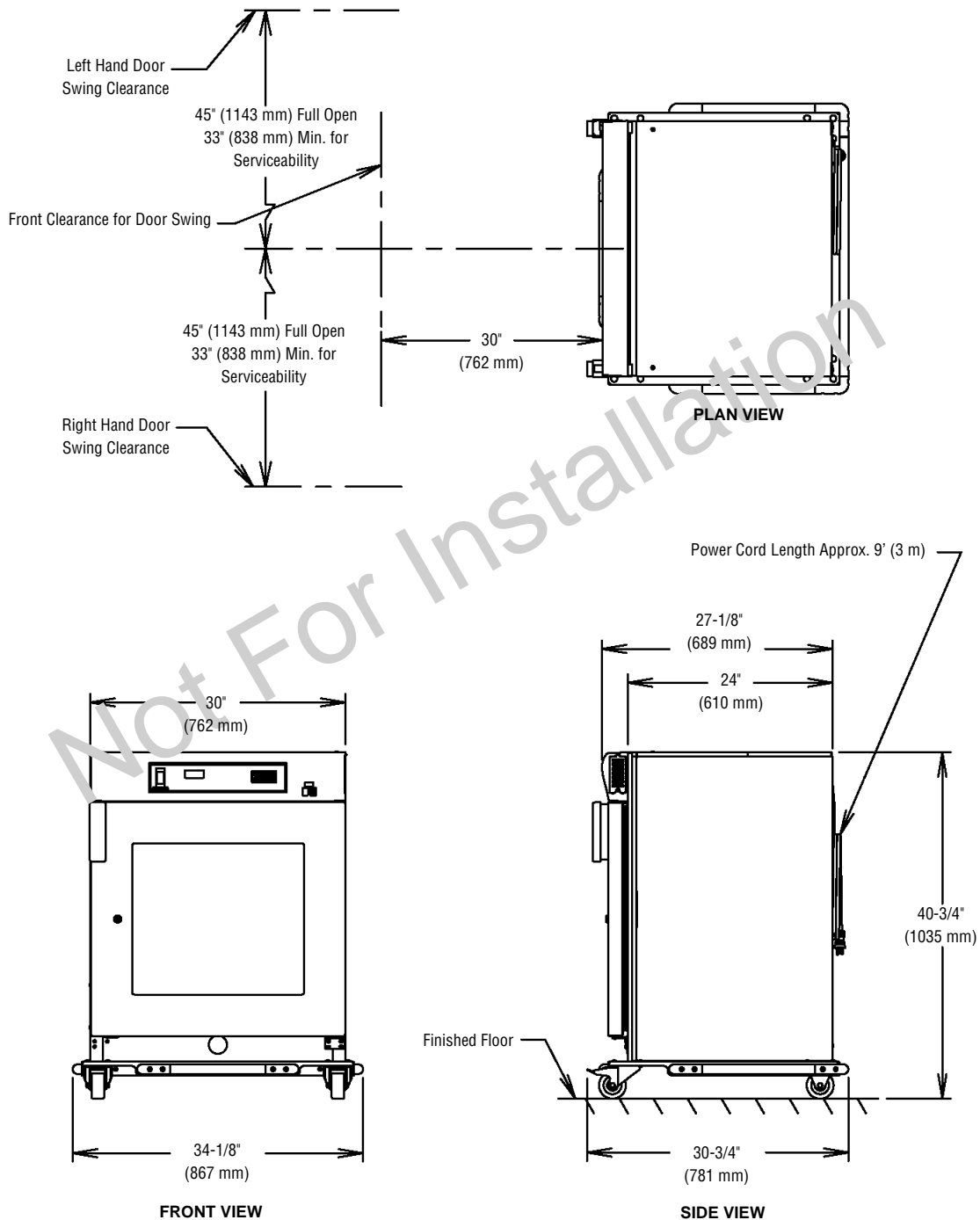
NOTE: Ventilation requirements: Ductwork is required for warming cabinet ventilation when enclosed in cabinet under counter. 4" (102 mm) diameter rigid metal pipe (not provided by STERIS) shall be installed to provide proper ventilation from warming exhaust system up into plenum area or to separate vent (not provided by STERIS) located at appropriate distance above counter top.

Reference listed equipment drawing for detailed installation specifications.
Obtain this drawing from your STERIS Representative.

Equip. Dwg. No.	Equipment Drawing Title
413726-872	Mid-Size Warming Cabinet, Single Compartment, Mobile Base

Dimensions are typical –
drawing is not to scale.

MOBILE, MID-SIZE MODEL



For Further Information, contact:

STERIS®



STERIS Corporation
5960 Heisley Road
Mentor, OH 44060-1834 • USA
440-354-2600 • 800-548-4873
www.steris.com

This document is intended for the exclusive use of STERIS Customers, including architects or designers. Reproduction in whole or in part by any party other than a Customer is prohibited.